

12 Metre

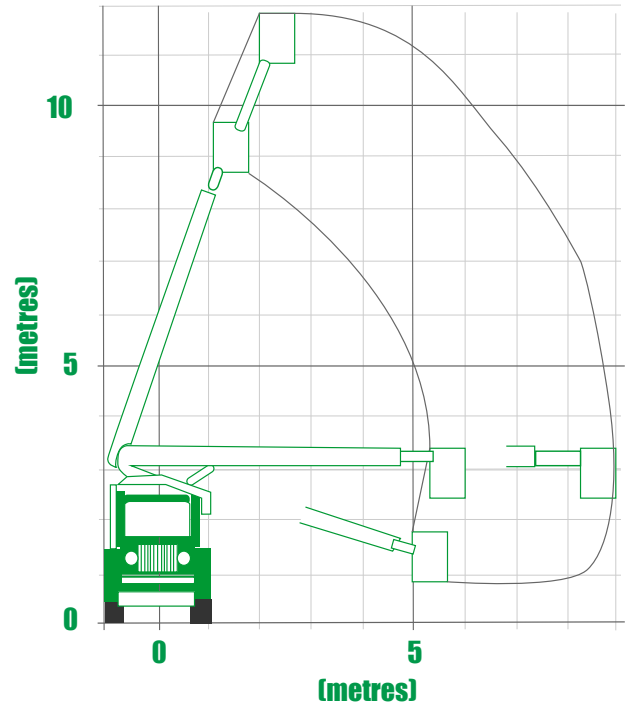
Stelco Telescopic Tower Elevating Work Platform

UNIT NUMBER: UNIT 12 & 21



General Specs

Max Working Height	12 m
Working Radius at Max Height	3.80 m
Safe Working Load	180 kg
Max Working Radius	9 m
Max Stabiliser Spread	2.2 m
Travelling Height	3.30 m
Travelling Width	2.20 m
Travelling Length	6.40 m
Overall Weight	7,500 kg
Basket Rotation	Nil



No Stabilisers. Spring Locks



Unit 12

www.ewphire.net.au

EWP Hire Pty Ltd

P: 0488 666 063

E: admin@ewphire.net.au

ABN: 61 162 101 699

P: PO Box 239 West Burleigh QLD 4219

A: 3 Rudman Parade, Burleigh Heads QLD 4220